

GroSens 2.2: Cloud bridge installation



TABLE OF CONTENTS

e-Gro Companion App: Cloud Bridge Installation

e-Gro Companion App

Let's start

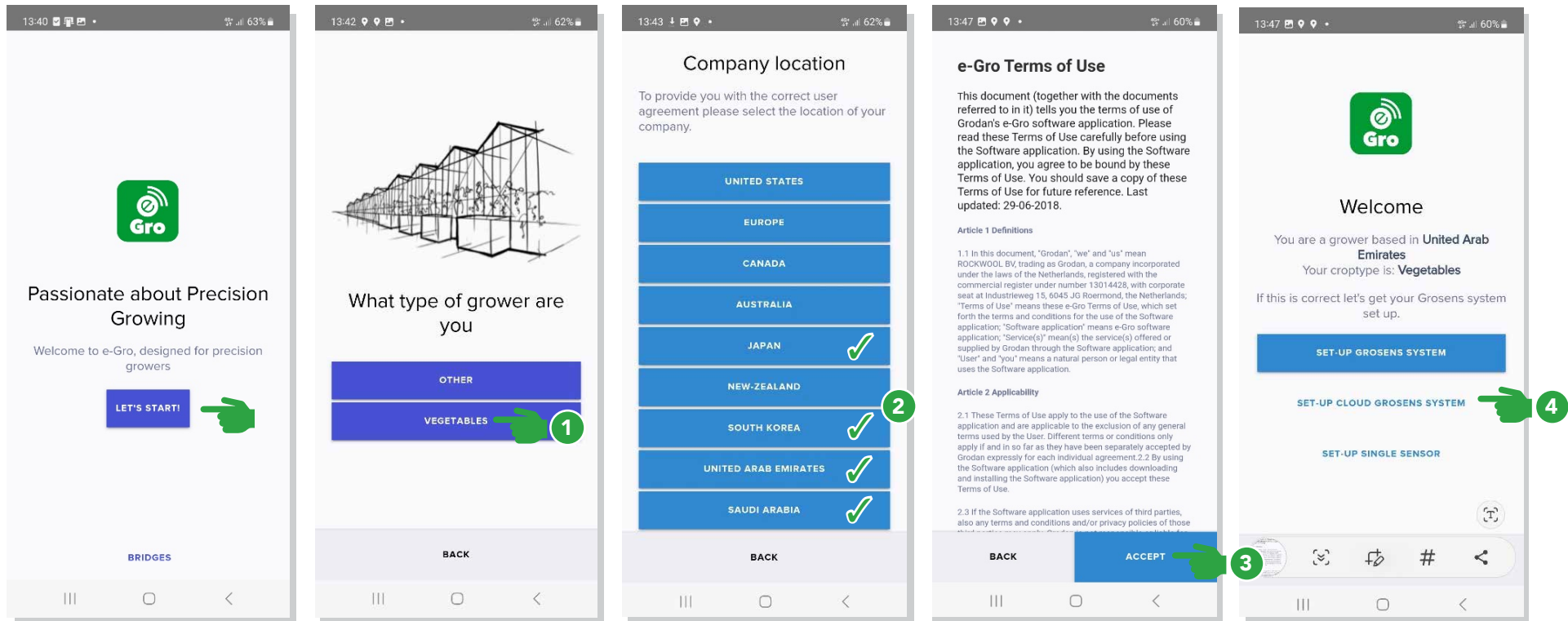
Step 1: Gateway installation

Step 2: Cloud bridge installation

Step 3: Add GroSens sensors

Step 4: Create a room or zone

Let's Start: Terms and Conditions



1 Select grower type:
Vegetables (For vegetables, fruit and flower)
Other (For medical crops market)

2 Select the region you are located. The Cloud Bridge is currently only supported in Japan, South Korea, United Arab Emirates and Saudi Arabia.

3 Accept the Terms and Conditions

4 Select set-up cloud groSENS system

Let's Start: System explanation

Do not install the Gateway in the greenhouse at this point.

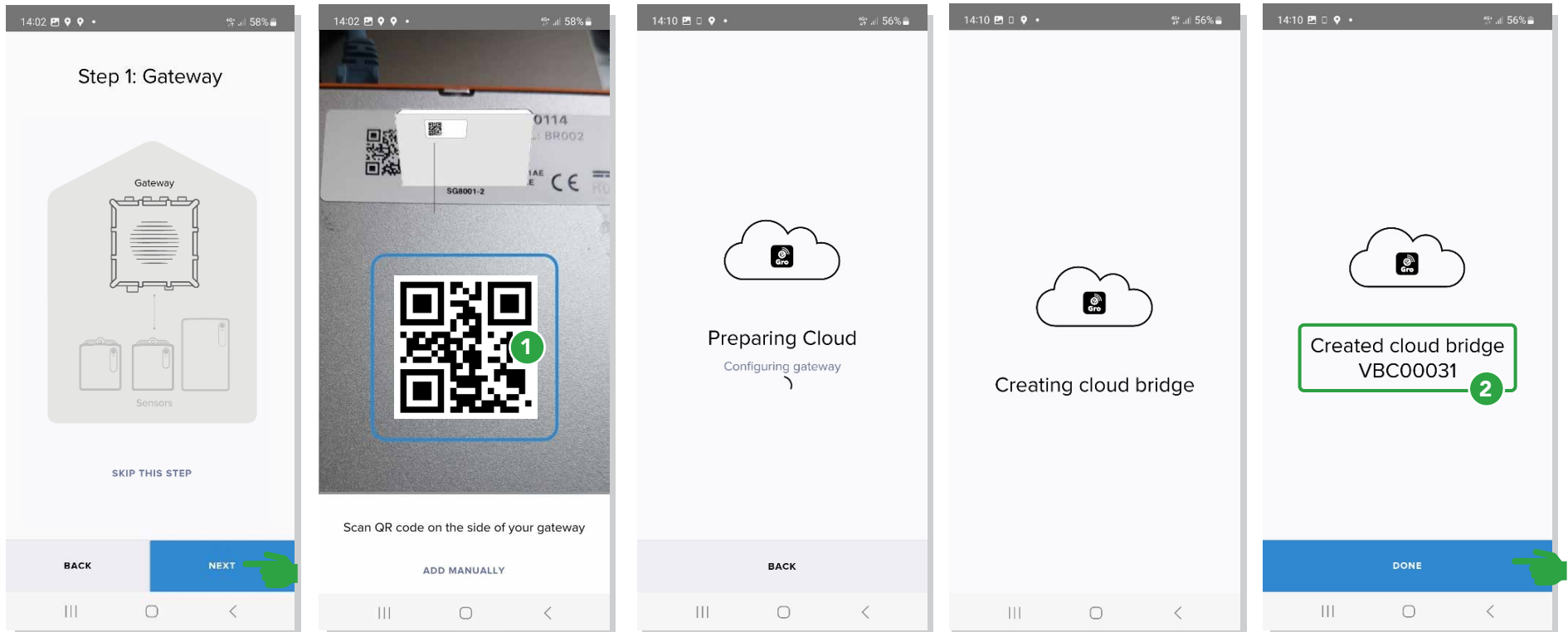
If you have more than 1 Gateway, use only 1 of the gateways to create the Virtual Bridge.

The image displays five sequential mobile app screens illustrating the e-Gro system architecture. Each screen features a diagram, descriptive text, and navigation buttons (BACK, NEXT, or DONE). A green hand icon points to the 'NEXT' button on the first four screens and the 'DONE' button on the final screen.

- Screen 1:** Overview diagram showing a greenhouse connected to a cloud. Text: "e-Gro, the revolutionary software platform that allows you to collect and combine the relevant data from your greenhouse and translate it into real-time insights for data-driven Precision Growing." Buttons: BACK, NEXT.
- Screen 2:** Diagram of a greenhouse labeled "Facility" containing a "Gateway" and "Sensors". Text: "With the Grosens sensors you can monitor your crops. The sensors connect to the gateway via radio signals." Buttons: BACK, NEXT.
- Screen 3:** Diagram of an "Office" showing a "Cloud" and a "Bridge". Text: "The gateway send the sensor data to your bridge, your office or in the cloud". Buttons: BACK, NEXT.
- Screen 4:** Diagram of a smartphone labeled "e-Gro companion app". Text: "Once connected you can use the e-Gro app to get real-time insights and smart recommendations based on the root zone, climate, crop and harvest data". Buttons: BACK, NEXT.
- Screen 5:** Summary diagram and text: "First the gateway need to be installed, then the bridge followed by the sensors". List:
 - ✓ Step 1: Gateway
 - ✓ Step 2: Bridge
 - ✓ Step 3: SensorsButtons: BACK, DONE.

Step 1: Gateway installation and cloud bridge creation

Do not install the Gateway in the greenhouse yet, it is a later step.

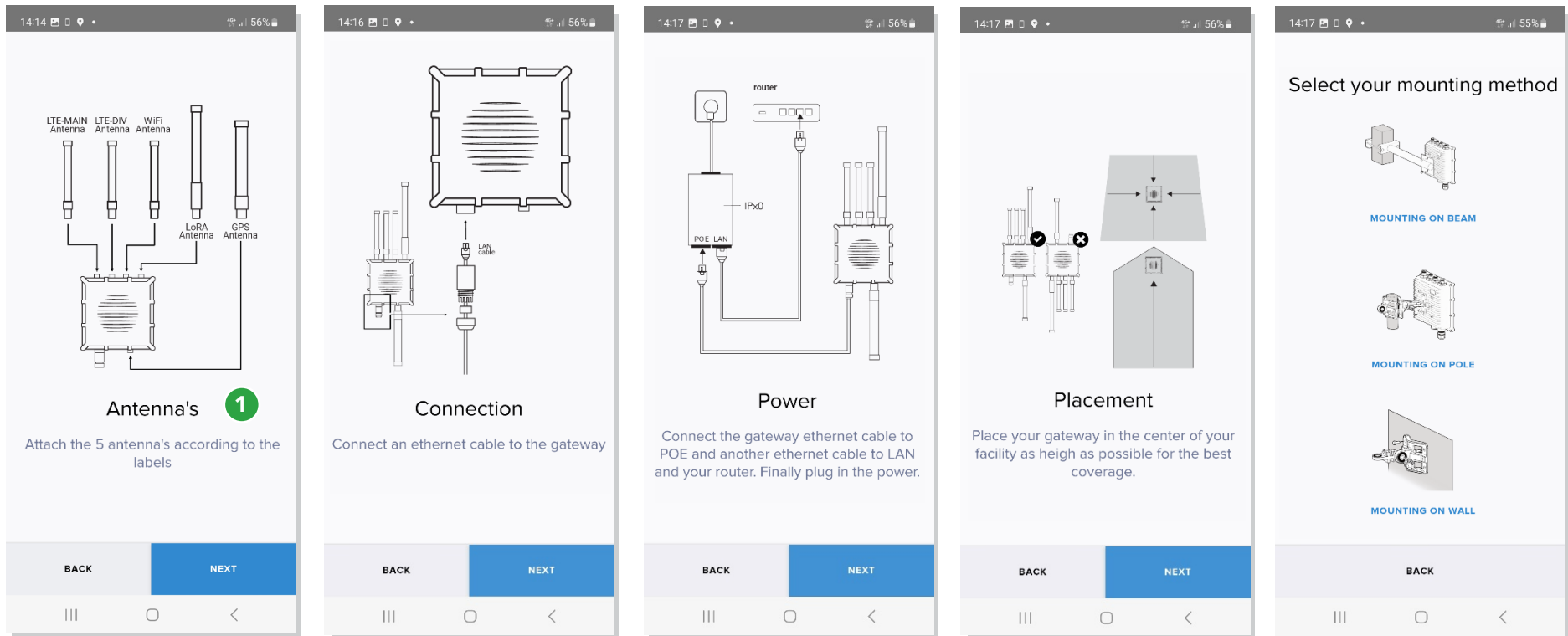


1 Scan the QR code on the gateway.
NOTE: Do not plug in ethernet/
power the gateway yet, that is a
later step

2 The actual number of created
cloud bridges varies.

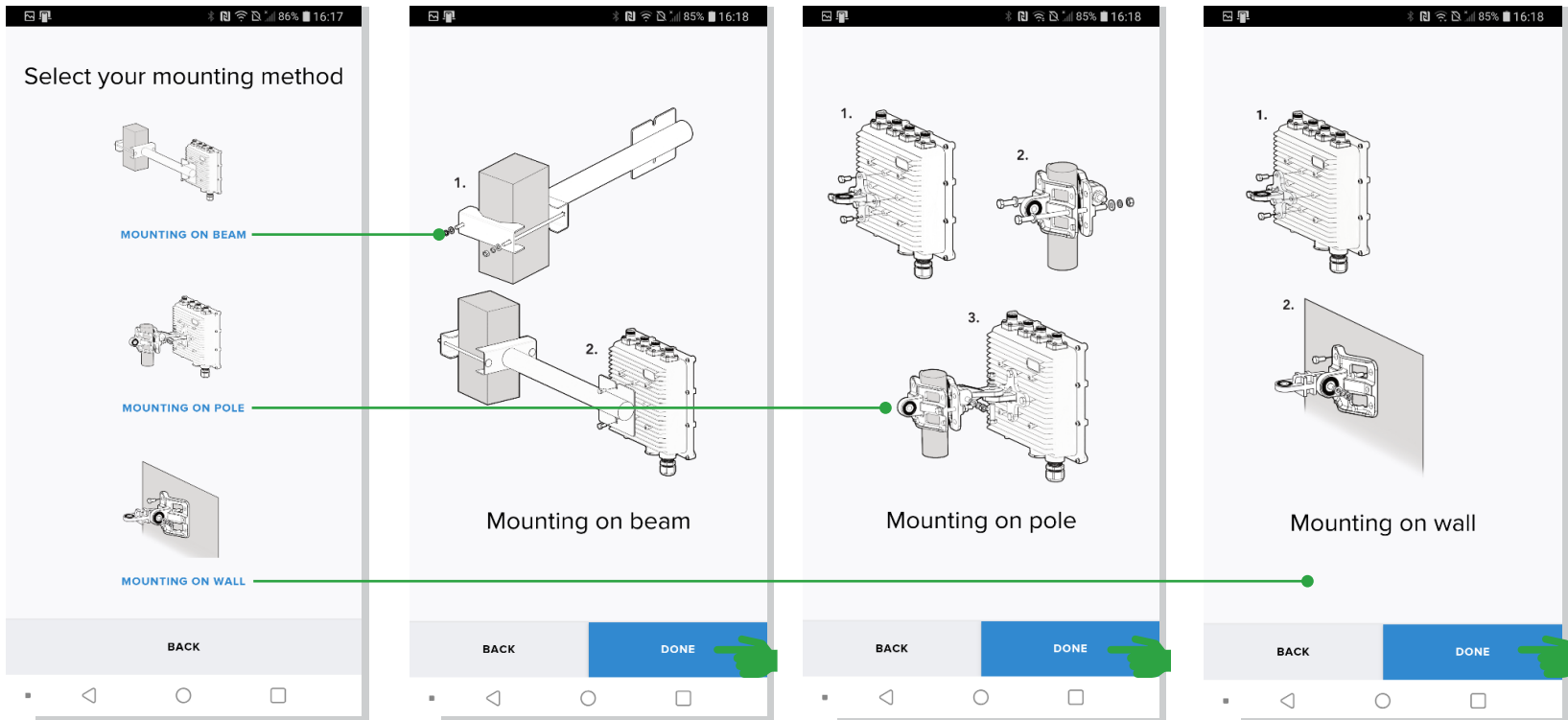
Step 1: Gateway installation

This is the step to install the Gateway in the greenhouse.

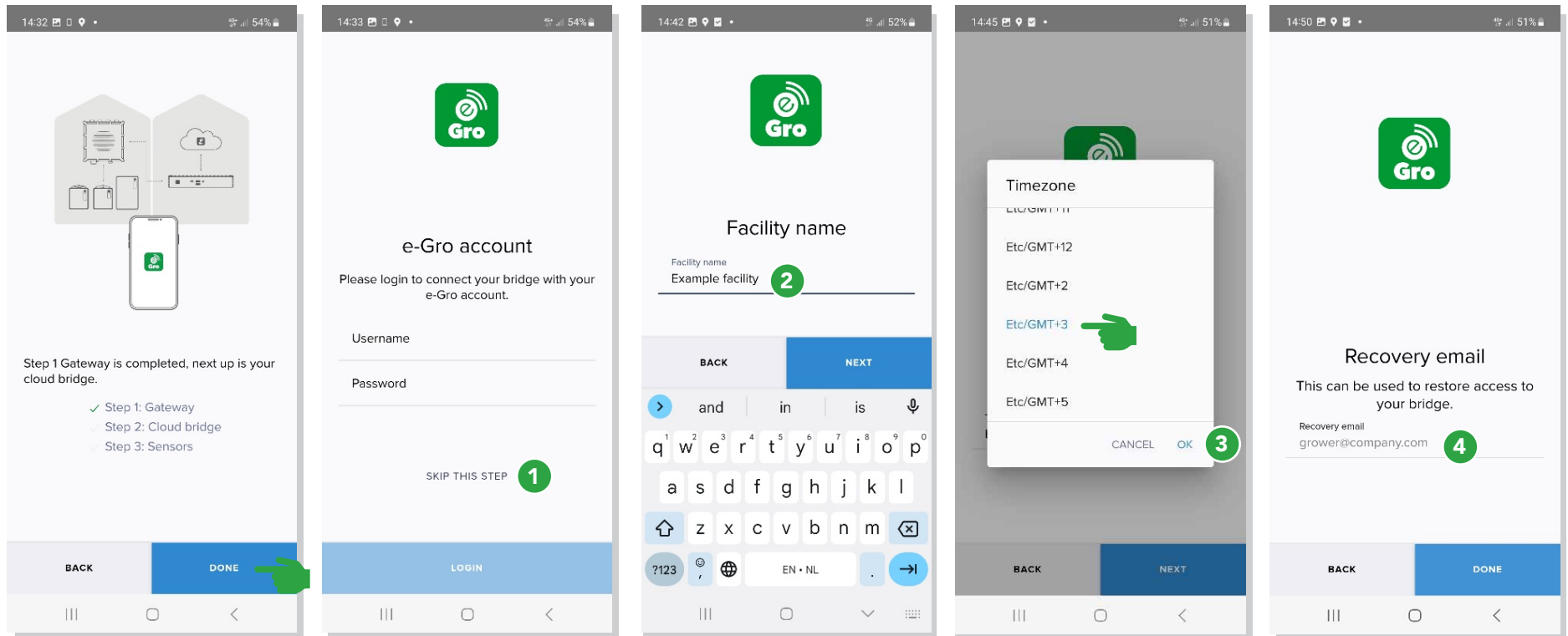


1 Connect the antenna.
NOTE: 2 antennas are delivered with the gateway. Ideally, use the longest antenna.

Step 1: Gateway installation



Step 2: Cloud bridge installation



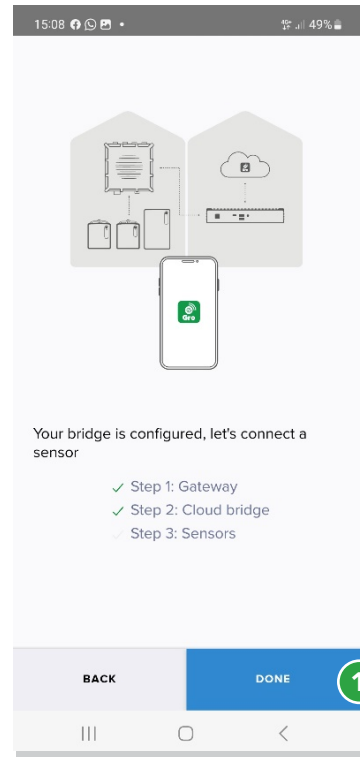
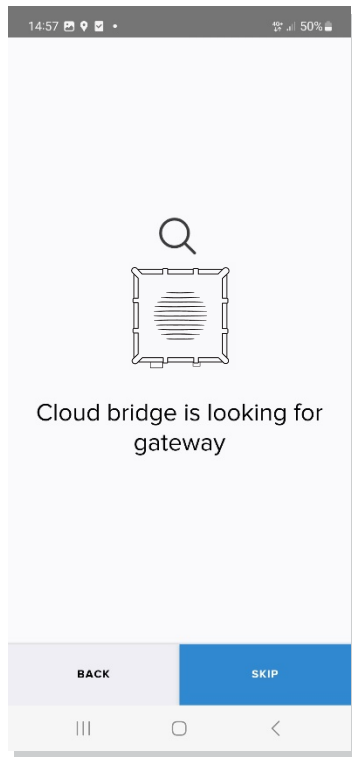
① Optional: Connection to e-Gro account.
NOTE: if you have not subscribed to e-Gro you will skip this step

② Enter facility name and press next

③ Select timezone, press OK and next

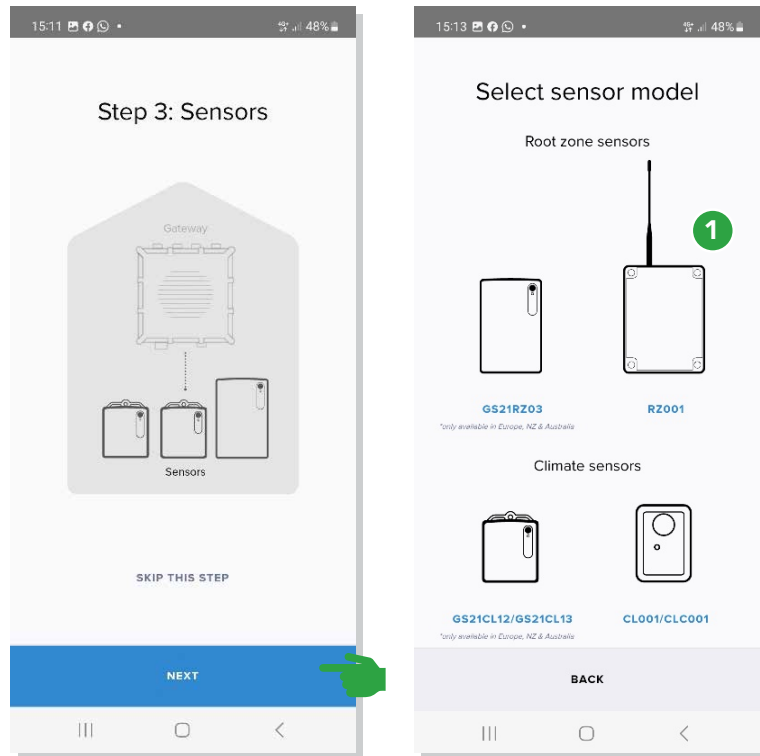
④ Enter your email address for recovery purposes. Note this is needed for events such as getting a new phone or when disconnected from the cloud bridge

Step 2: Cloud bridge installation



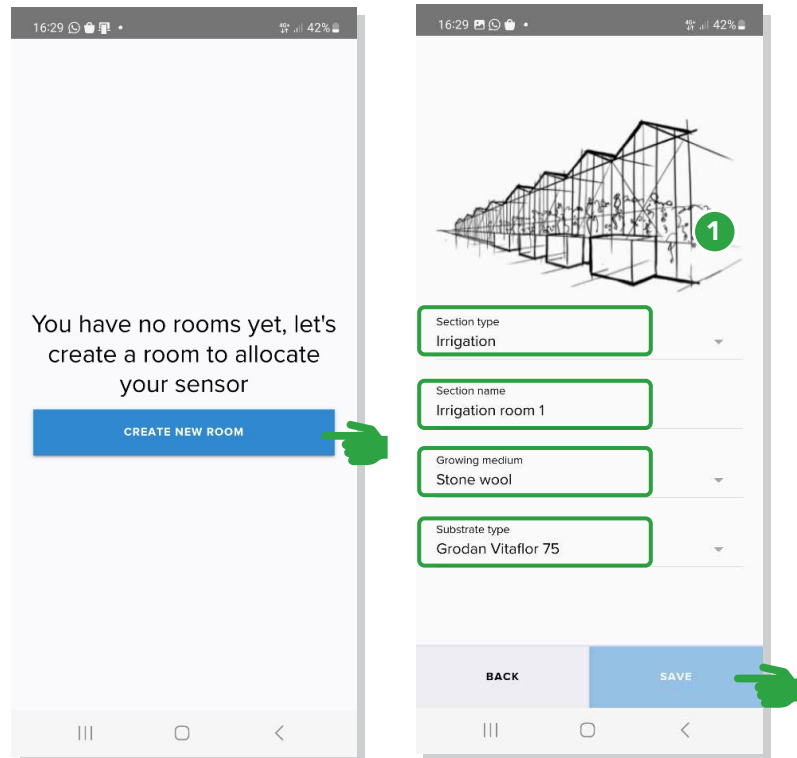
1 Select Done

Step 3: Add GroSens sensors



1 Select the sensor to install and follow the onscreen instructions. Additional details on GroSens sensor installation, please refer to the GroSens installation manual

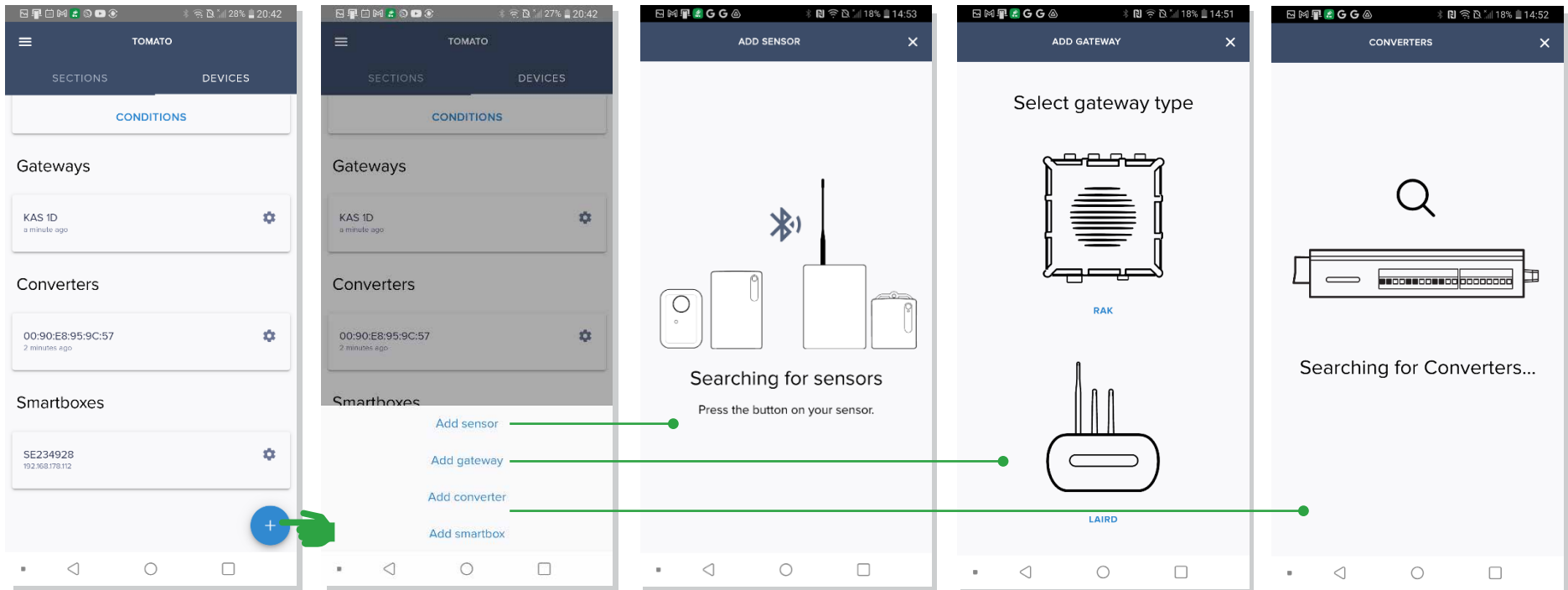
Step 4: Create a room or zone



1 Name your room and select correct substrate type

Step 5: Device management: Add Hardware

In this step, you can add additional Gateways. Note that you do not need to scan additional QR codes for additional Gateways.



Processes are similar to installation.

The Grodan Group supplies innovative, sustainable stone wool substrate solutions for the professional horticultural sector. Based on Precision Growing principles, these solutions are particularly applied to the cultivation of vegetables and flowers. In addition to its stone wool substrates, the Grodan Group also provides tailor-made advice and tools to support Precision Growing and thus facilitate the sustainable production of healthy, safe and tasty fresh produce for consumers.

Grodan, a division of ROCKWOOL

Industrieweg 15
Postbus 1160, 6040 KD Roermond
The Netherlands
T +31 (0)475 35 30 20
F +31 (0)475 35 37 16
info@grodan.com
www.grodan.com



ROCKWOOL® and Grodan® are registered trademarks of the ROCKWOOL Group.