

# GroSens 2.2: e-Gro Companion App for GroSens



# e-Gro Companion App: Features of Desktop Viewer & Companion App

## e-Gro Companion App

<b>5</b>		User Settings
<b>7</b>		e-Gro Connection (optional)
<b>8</b>		Bridge Configuration
<b>10</b>		Climate Computer Connection
<b>11</b>		User Management
<b>12</b>		User Management: Add a User
<b>14</b>		Facility Management: Add a Section
<b>17</b>		Device Management: Add Hardware
<b>18</b>		Device Management: Sensor Modifications
<b>20</b>		Device Management: Gateway Modifications
<b>22</b>		e-Gro Companion App: View Data

# e-Gro Companion App: Features of Desktop Viewer & Companion App

## e-Gro Companion App is the software for GroSens

- Consists of desktop viewer and mobile app

## Desktop viewer runs local and in cloud – same functionality in both cases

- Cloud is accessible everywhere via internet
- Local desktop viewer connects to bridge via LAN (no internet connection required)

## Desktop viewer main function is data viewing

- Use large computer screen for detailed analysis & comparison of graphs

## Mobile app main function is managing the sensor network

- General user and system settings
- User management (adding/removing users)
- Hardware & facility management

## Simple alerts possible (extensive alerts in e-Gro Essential)

- min-max value per sensor value
- Settings in desktop - In case values are outside the specified range you get a push notification in the mobile app

	GroSens 2	
	e-Gro companion	
	desktop viewer (local/cloud)	mobile app
user settings		
metric/imperial		M/I
language	follows browser	UK/NL/FR/PL
time zone		facility based
system settings		
system back-up		x
user management		x
cloud services (APIs)		+, -, ST
hardware management		
bridge/smartbox	ST	+, -, R, ST
gateway / receiver	ST	+, -, ST
sensors	-, AS, ST	+, -, AS, ST, UP
converter	ST	+, -, AS, ST
facility management		
sections/rooms	UP, ST	+, -
tables/gutters	-	-
slab type	ST	per section/room
data viewer		
view sensors/averages	<= 7	1
time axis	1.5/3/7/30 days	1.5 days
adjustable y-axis	all graphs	
photoperiod	natural & artificial	
data export	180 days	
alerts		
min/max sensor values	WC/EC/T/RH/CO2	
sensor value changes	ΔWC/hr	
push notifications	HW & sensor alerts	HW & sensor alerts

+ = add; - = remove

R = reset; ST = status only (no editing)

AS = assign; UP = update

Changeable
Fixed

Table displays the different possibilities in the mobile app compared to desktop viewer

# e-Gro Companion App: Settings

	GroSens 2	
	e-Gro companion	
	desktop viewer (local/cloud)	mobile app
user settings		
metric/imperial		M/I
language	follows browser	UK/NL/FR/PL
time zone		facility based
system settings		
system back-up		x
user management		x
cloud services (APIs)		+, -, ST
hardware management		
bridge/smartbox	ST	+, -, R, ST
gateway / receiver	ST	+, -, ST
sensors	-, AS, ST	+, -, AS, ST, UP
converter	ST	+, -, AS, ST
facility management		
sections/rooms	UP, ST	+, -
tables/gutters	-	-
slab type	ST	per section/room
data viewer		
view sensors/averages	<= 7	1
time axis	1.5/3/7/30 days	1.5 days
adjustable y-axis	all graphs	
photoperiod	natural & artificial	
data export	180 days	
alerts		
min/max sensor values	WC/EC/T/RH/CO2	
sensor value changes	ΔWC/hr	
push notifications	HW & sensor alerts	HW & sensor alerts

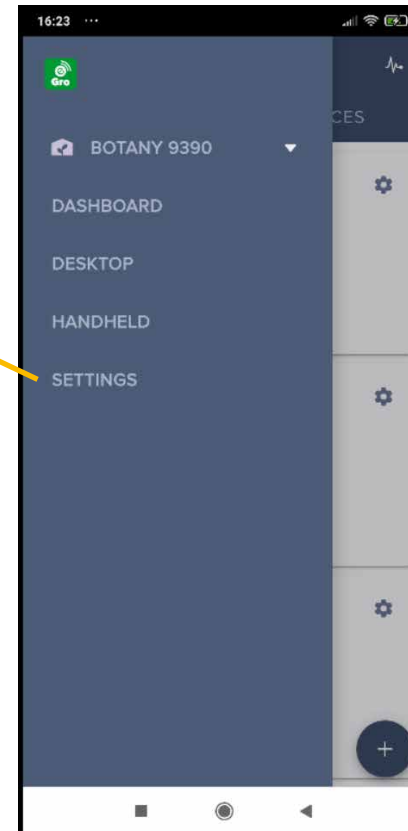
+ = add; - = remove

R = reset; ST = status only (no editing)

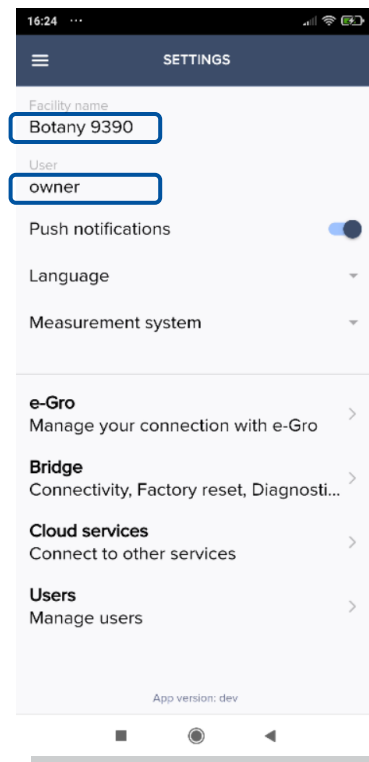
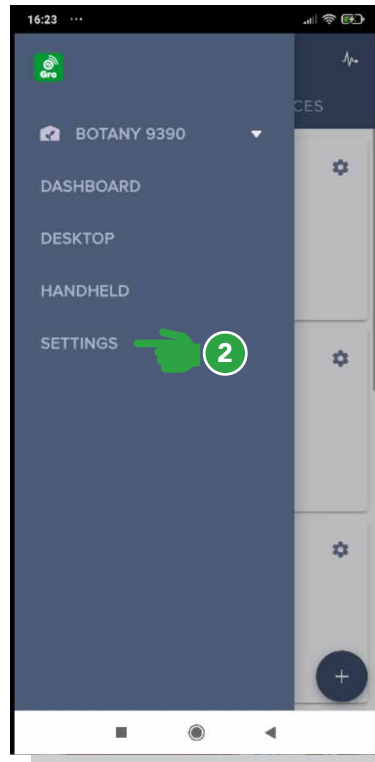
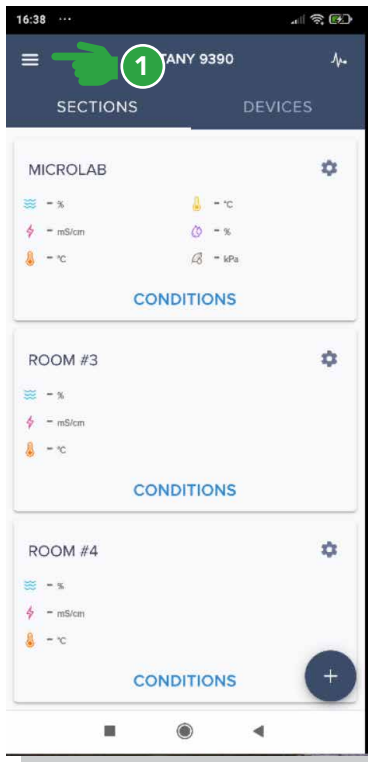
AS = assign; UP = update

Table displays the different possibilities in the mobile app compared to desktop viewer

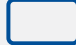
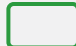


Changeable
Fixed



# Settings: Getting started



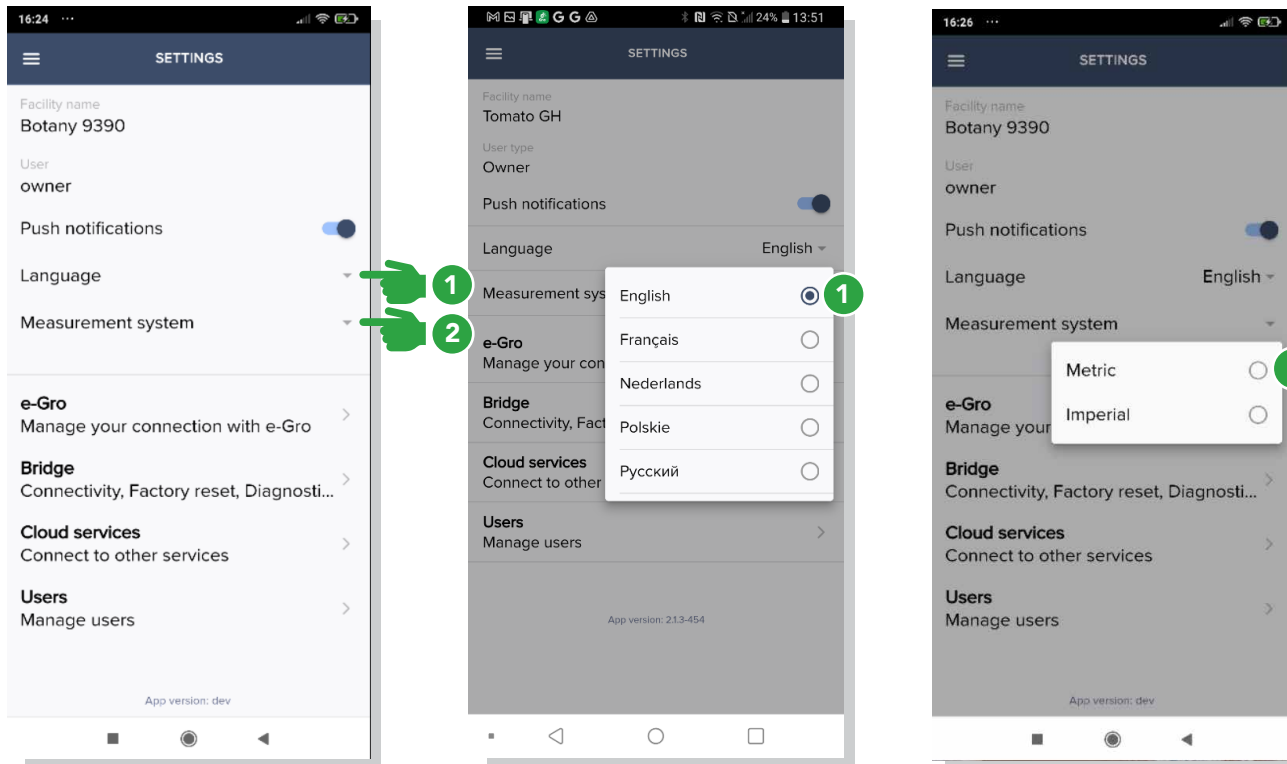
Throughout the getting started guide, the following colour coding has been used:

-  Information only, cannot be changed
-  Information that can be changed manually
-  Important – ie Mandatory field or Caution
-  Information only, cannot be changed

1 On main screen, select the main menu button

2 Select Settings

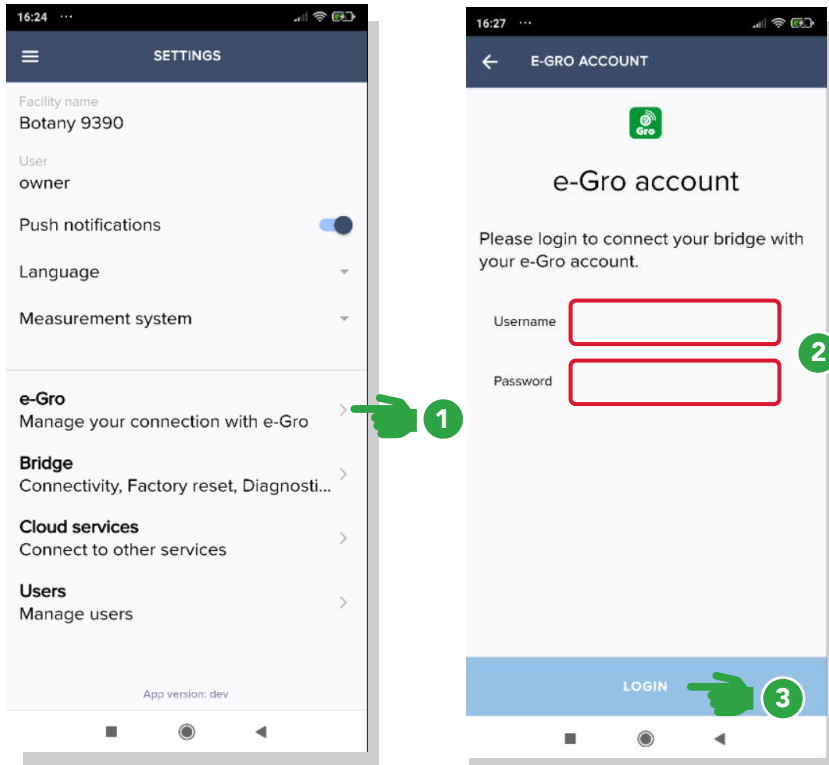
# Individual user settings



1 Choose language  
Select language of choice

2 Choose Measurement System  
Select Metric (ie meters) or  
Imperial (ie feet)

# System settings: e-Gro essential (optional)

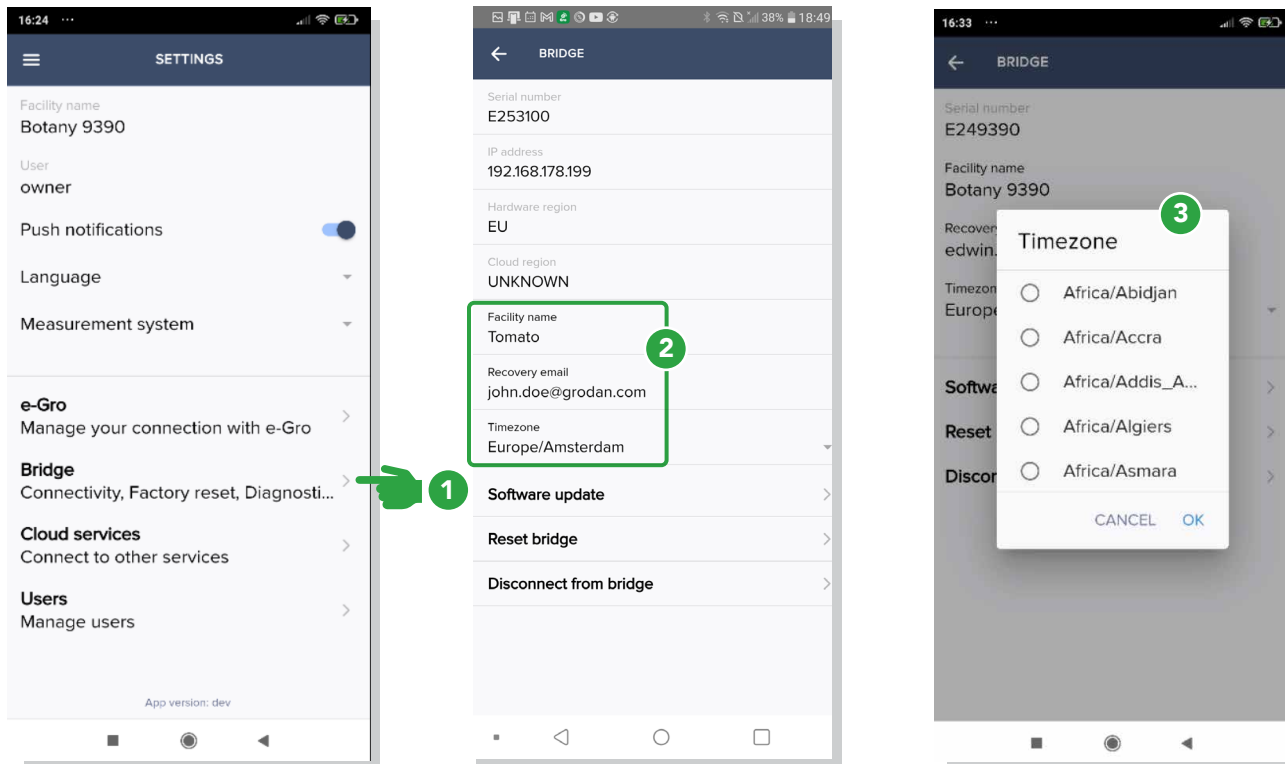


This login step is only needed to connect to an existing e-Gro Essential account

NOTE: GroSens system operates in two modes, with e-Gro or as independent hardware

- 1 Select e-Gro
- 2 Enter e-Gro credentials to login
- 3 Press Login

# System settings: Bridge configuration



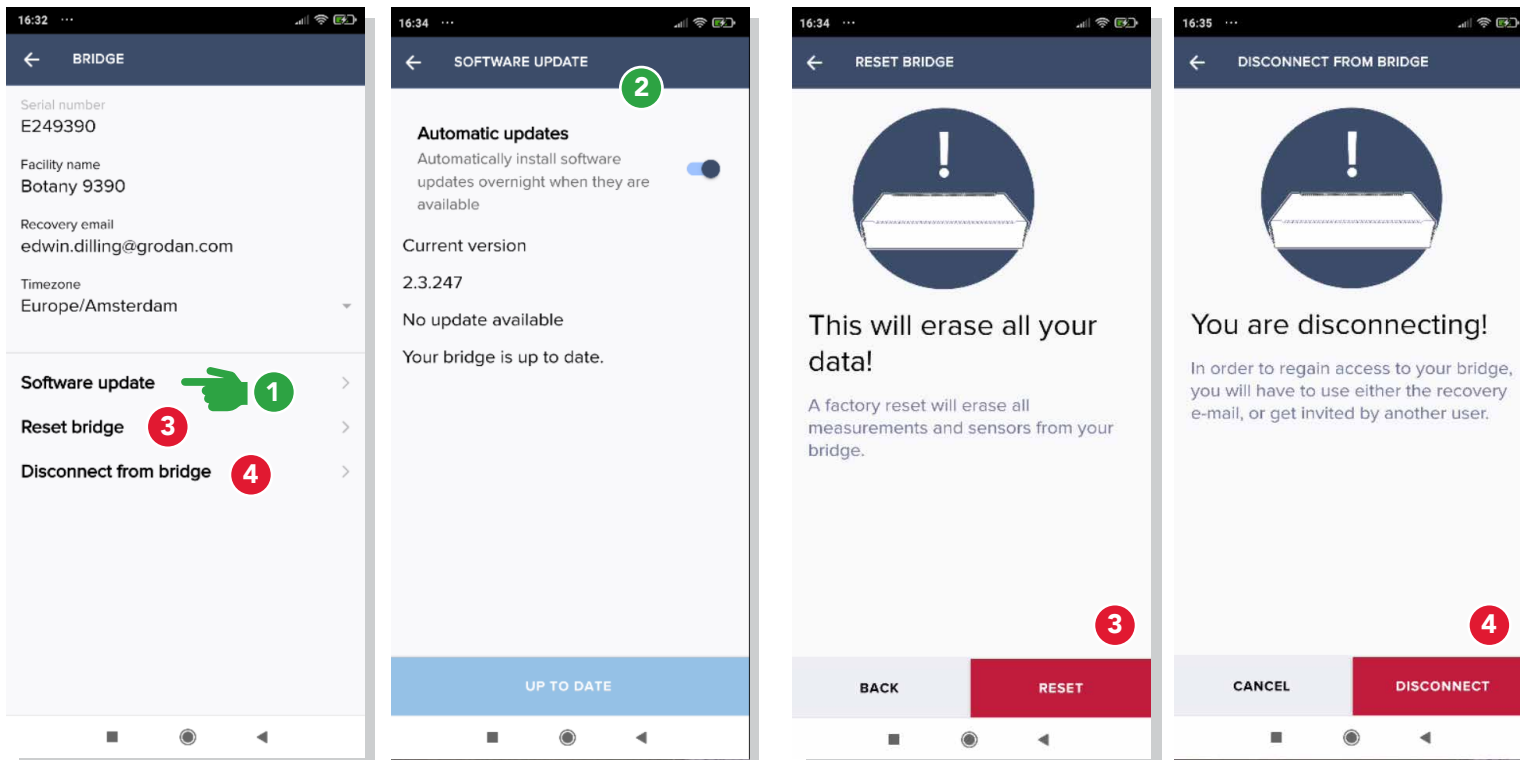
1 From Settings, select Bridge

2 This has already been entered during installation but can be changed here.

3 Select Timezone and choose correct zone



# System settings: Bridge configuration



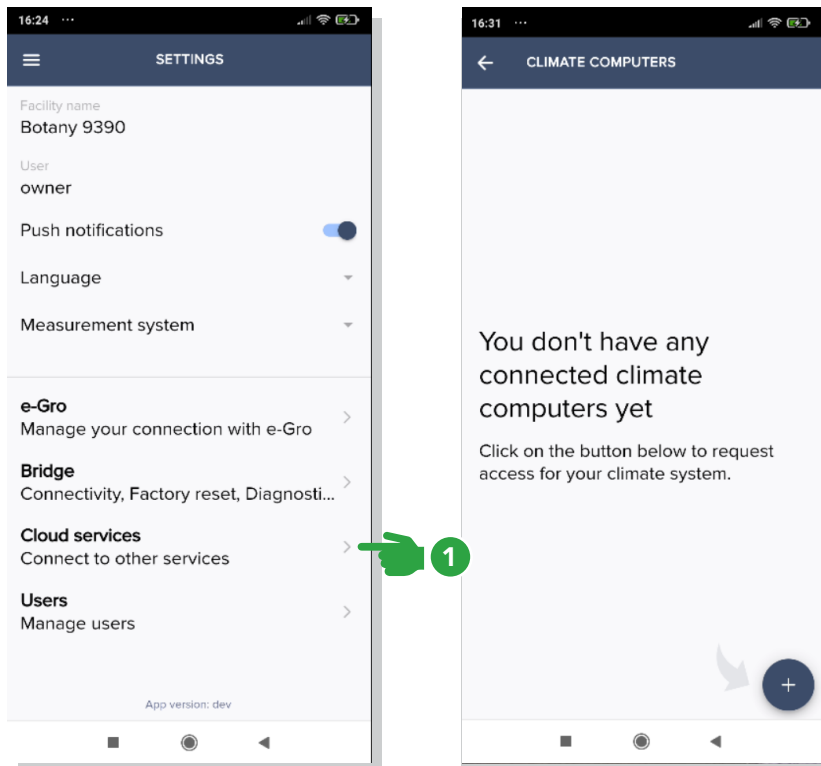
1 Select Software update. We recommend to select Automatic Updates. An internet connection is required.

2 Updates can also be initiated manually from the Software Update screen.

3 Use Caution when selecting Reset Bridge, it will erase all data and return to factory settings.

4 Use Caution when selecting Disconnect from Bridge, it will cause you to lose access to your data and you will loose connection to the bridge.

# System settings: Climate computer connection



1 Possibility to request API access for Hortimax/Ridder and Hoogendoorn (via Lets Grow).

**NOTE:**

Grodan charges a minimal annual connection fee.

Your climate computer vendor will also charge connection fee.

Please contact your Account Manager for more information.

# System settings: User management

Three User types can be assigned:

## Owner

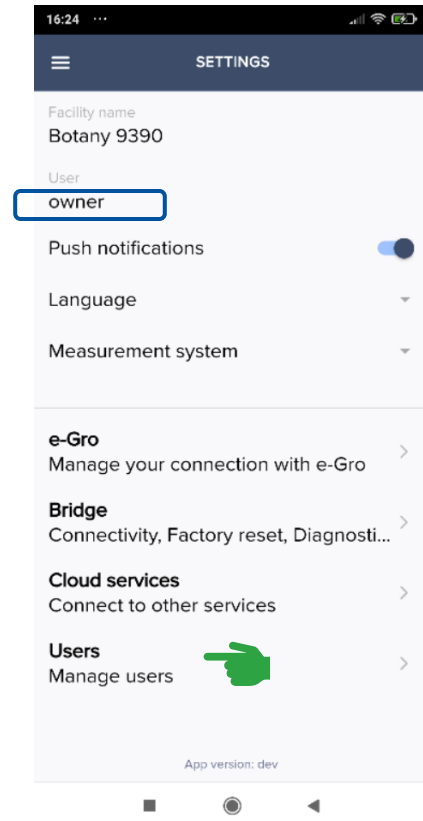
- Facility management (able to add/delete sections or sensors)
- Full user management (able to invite or delete Managers or Viewers)

## Manager (Primary)

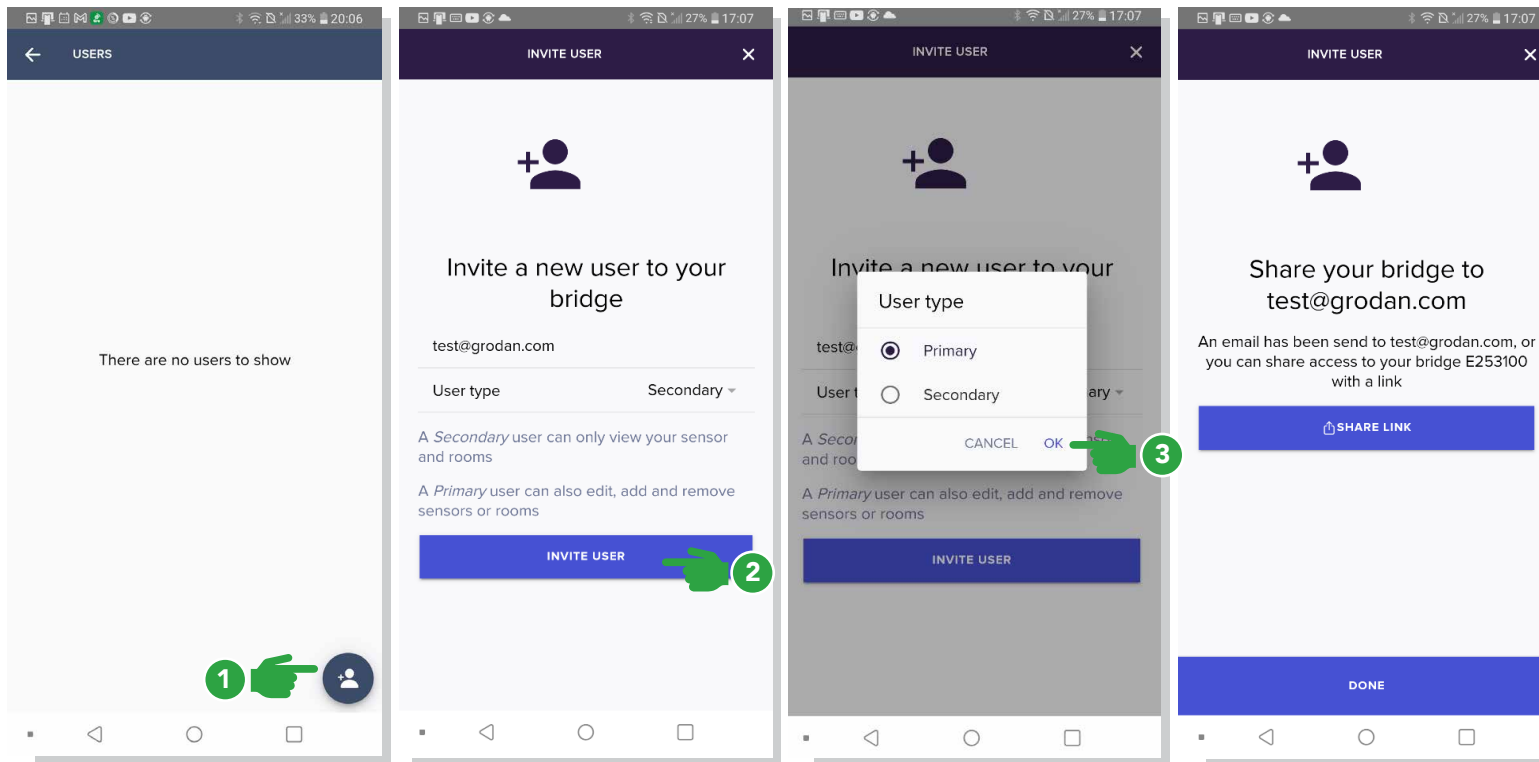
- Facility management (able to add/delete sections or sensors)
- Limited user management (able to invite or delete Viewers only)

## Viewer (Secondary)

- Can view data
- No user management, no facility management



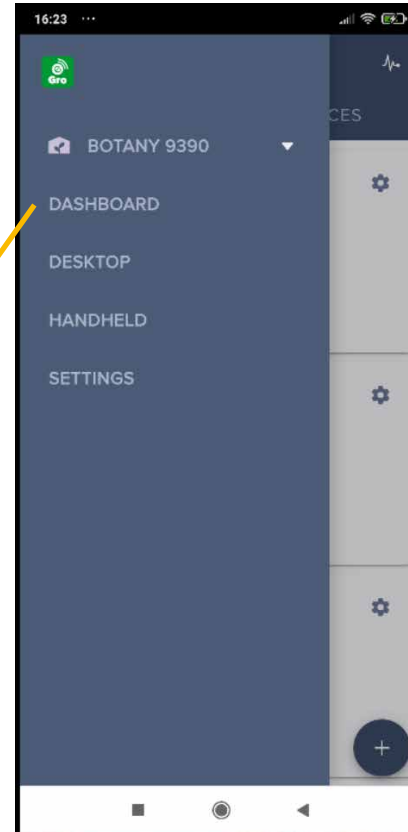
# System settings: Add user and assign user type



- 1 In the settings screen, select the user icon at bottom right
- 2 Click INVITE USER
- 3 Select level of access for the new user, click OK

# e-Gro Companion – Hardware & facility management

	GroSens 2	
	e-Gro companion	
	desktop viewer (local/cloud)	mobile app
user settings		
metric/imperial		M/I
language	follows browser	UK/NL/FR/PL
time zone		facility based
system settings		
system back-up		x
user management		x
cloud services (APIs)		+, -, ST
hardware management		
bridge/smartbox	ST	+, -, R, ST
gateway / receiver	ST	+, -, ST
sensors	-, AS, ST	+, -, AS, ST, UP
converter	ST	+, -, AS, ST
facility management		
sections/rooms	UP, ST	+, -
tables/gutters	-	-
slab type	ST	per section/room
data viewer		
view sensors/averages	<= 7	1
time axis	1.5/3/7/30 days	1.5 days
adjustable y-axis	all graphs	
photoperiod	natural & artificial	
data export	180 days	
alerts		
min/max sensor values	WC/EC/T/RH/CO2	
sensor value changes	ΔWC/hr	
push notifications	HW & sensor alerts	HW & sensor alerts



+ = add; - = remove

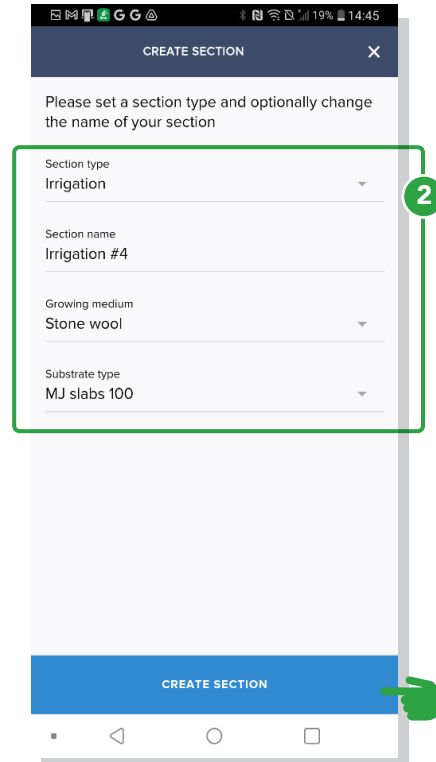
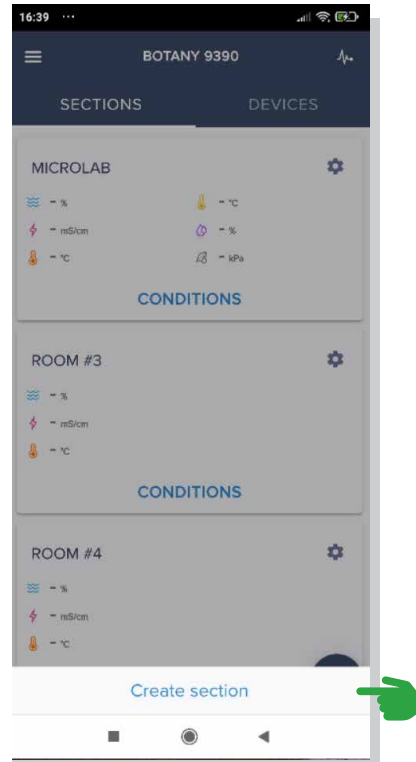
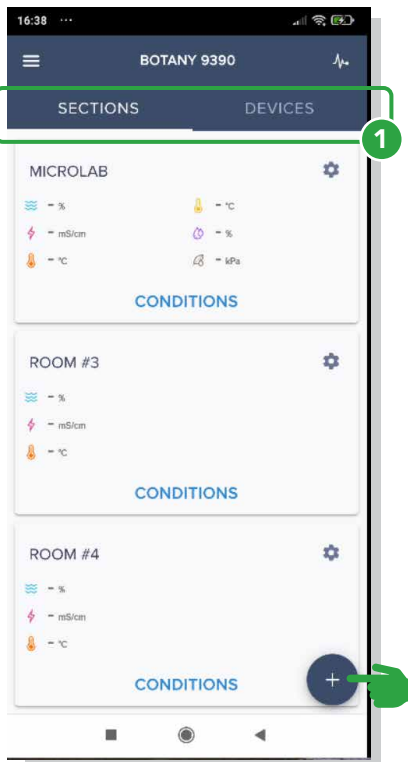
R = reset; ST = status only (no editing)

AS = assign; UP = update

Changeable
Fixed

Table displays the different possibilities in the mobile app compared to desktop viewer

# Facility management – Add a section for veg growers



1 In the dashboard, different zones and rooms can be managed from the sections tab.

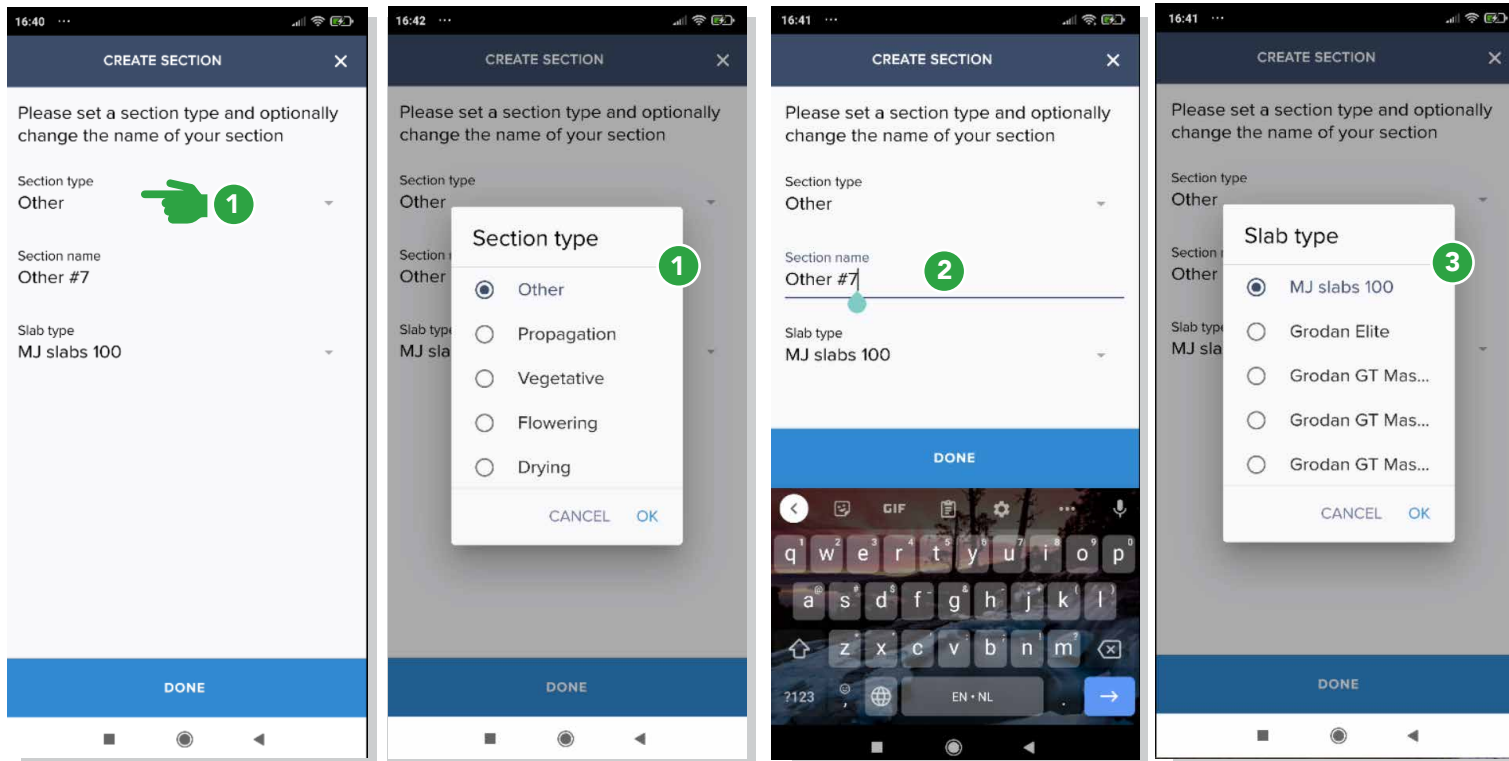
2 Section parameters are mandatory for Facility Management.

Section type can be Irrigation or Climate.

You can optionally set a custom section name

NOTE: select the correct Growing medium and Substrate type

# Facility management – Add a section for other grower

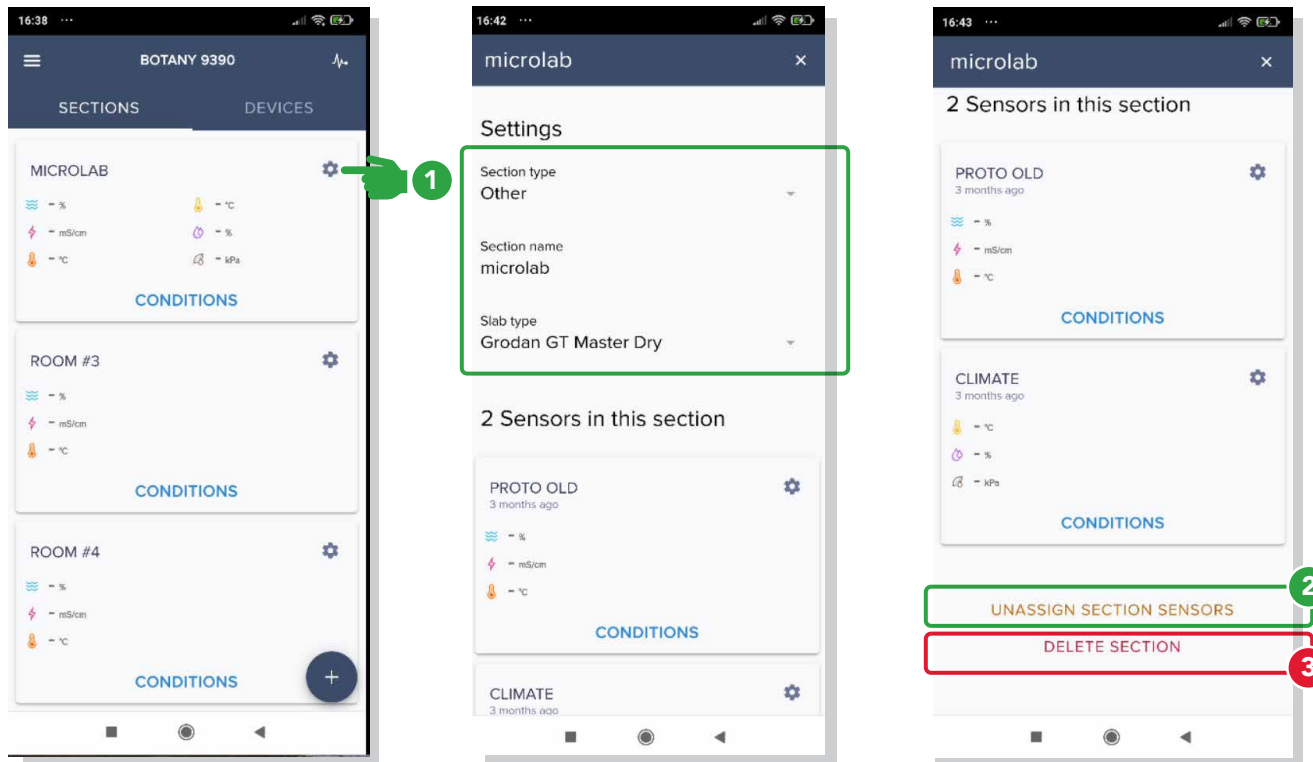


① For Medicinal Crops, select Section type and choose Propagation, Vegetative, Flowering, Drying, Processing or Other.

② Enter Section name

③ Select Slab Type, then choose the correct Slab type from menu

# Facility management – Modify & delete a section



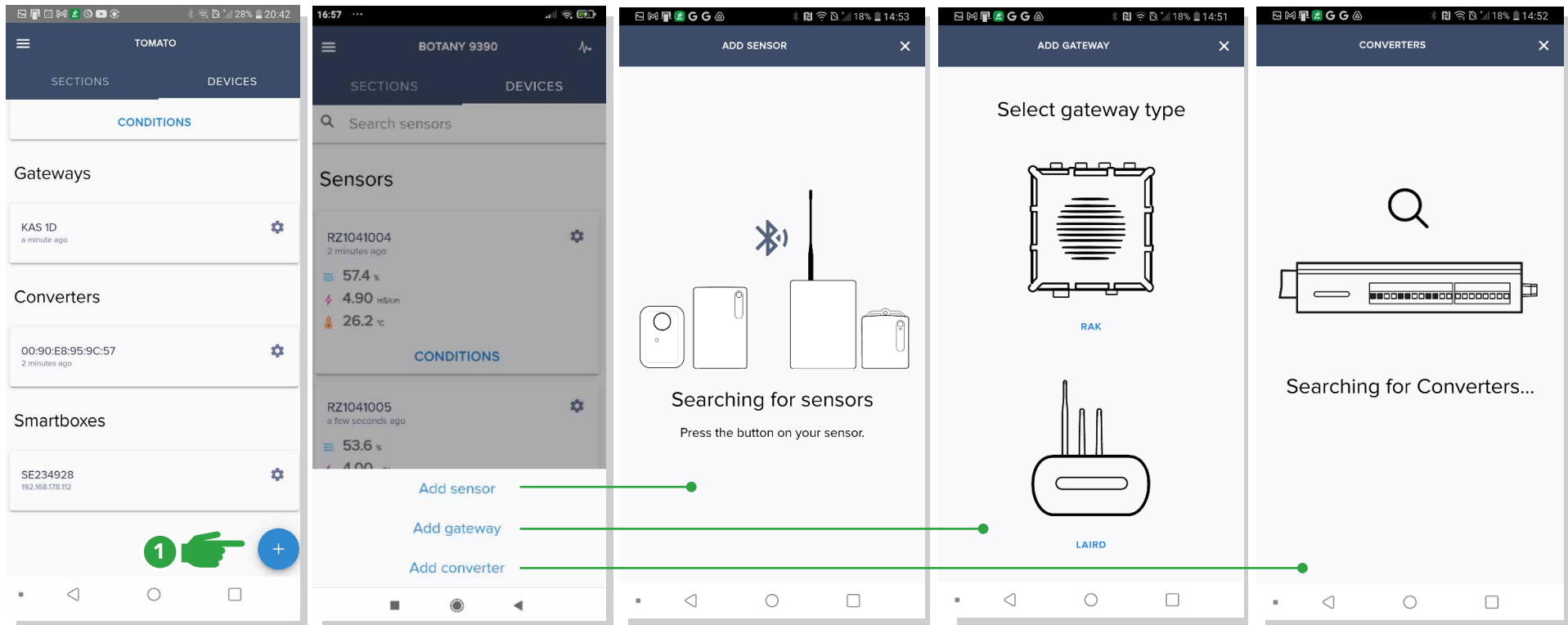
1 From the Sections screen, choose the Section that the change is needed, select the Settings icon

2 Scroll to the bottom of the Section screen.  
The Unassign Section Sensors option will remove all sensors from the Section. This option can be used when sensors are moved to a new Section

3 The Delete Section option will delete the complete Section and will unassign all Section sensors. Use with caution.

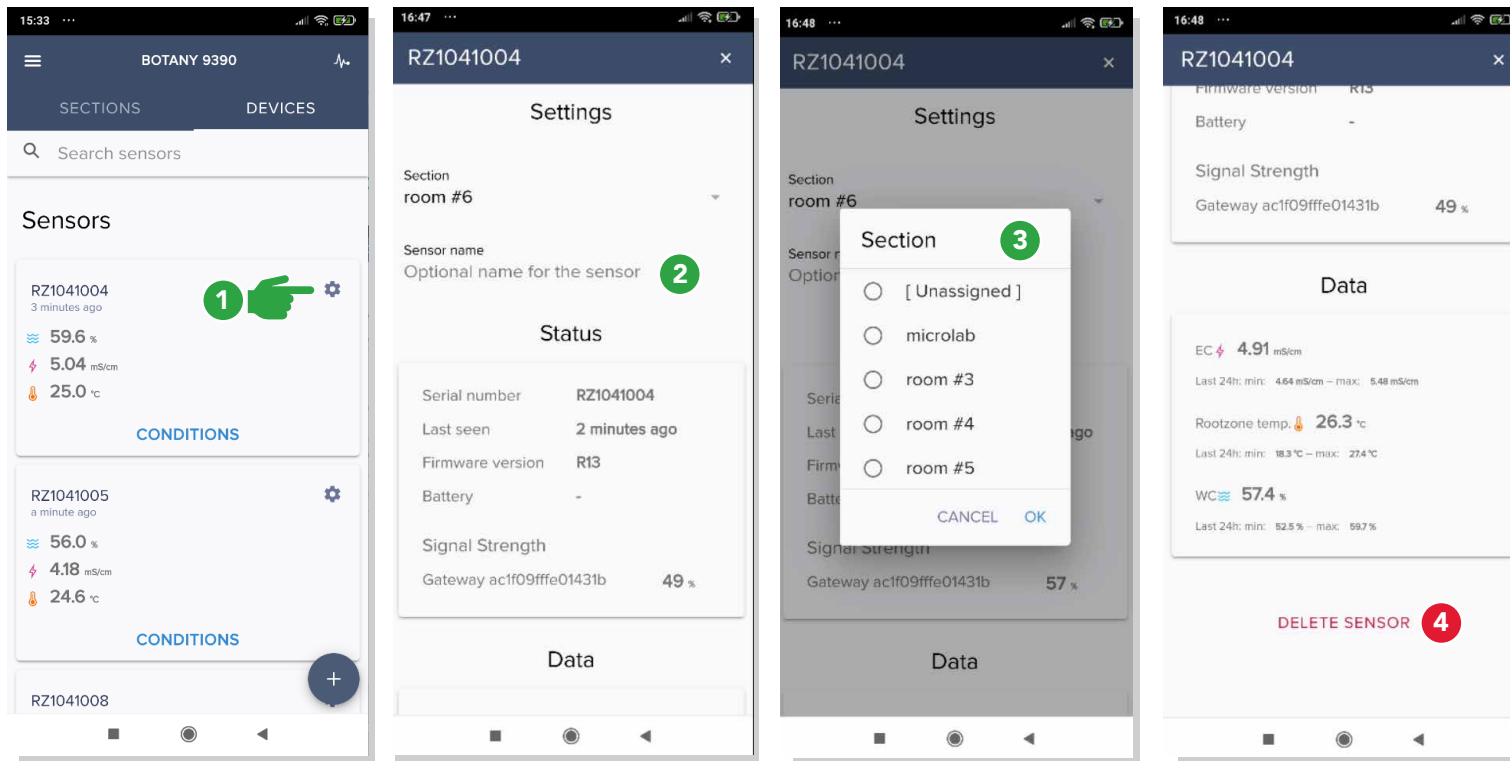


# Device management: Add hardware



1 From Devices tab, select the plus icon to add: Add sensor, Add gateway or Add converter and follow instructions for each Hardware type selected

# Device management: Sensor settings (via Devices tab)



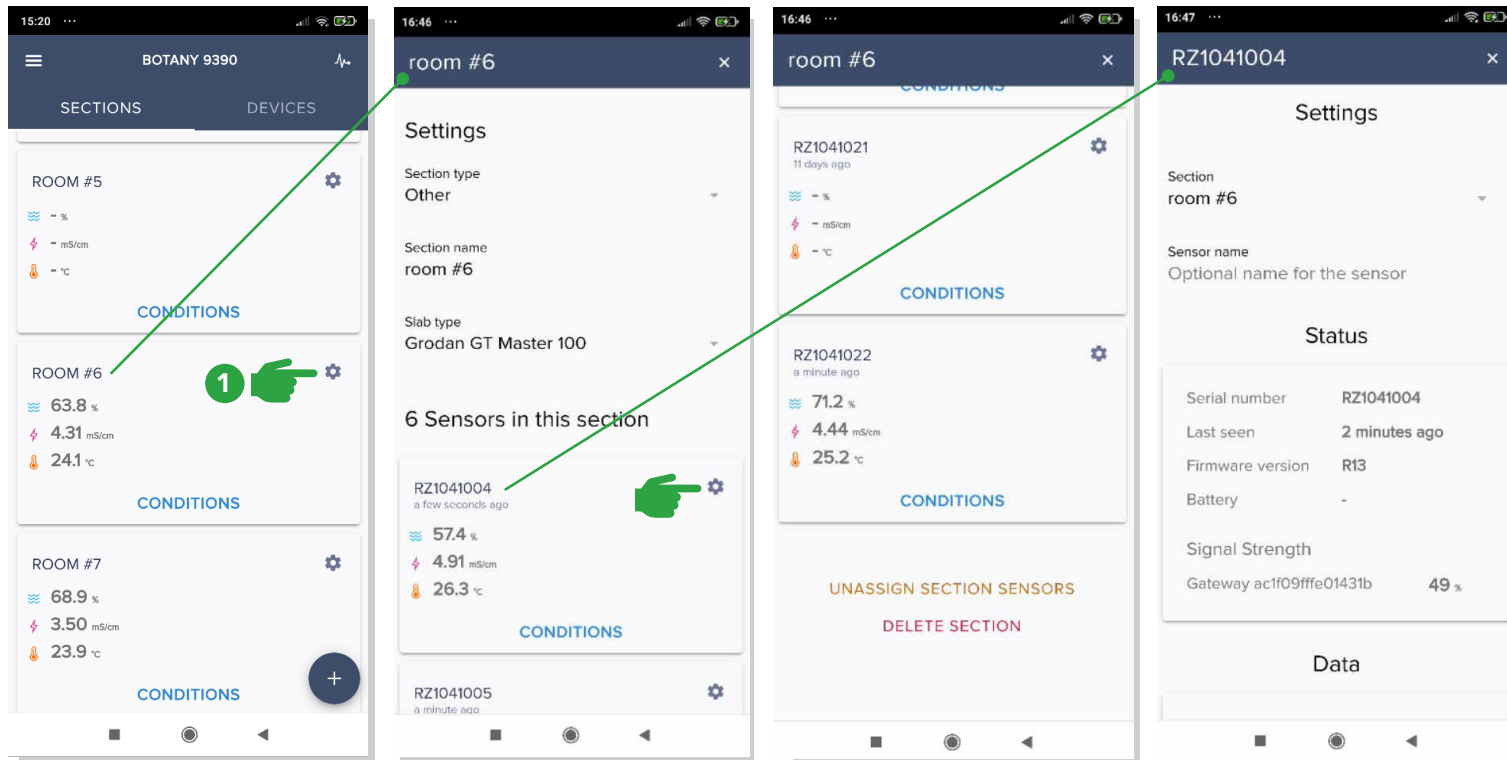
1 From the Devices tab, select the Sensor to be modified by clicking the settings icon beside the Sensor

2 We recommend using a custom sensor name to identify the sensor's location in your facility. For example: row 12, offset 4

3 Select Section name, select OK

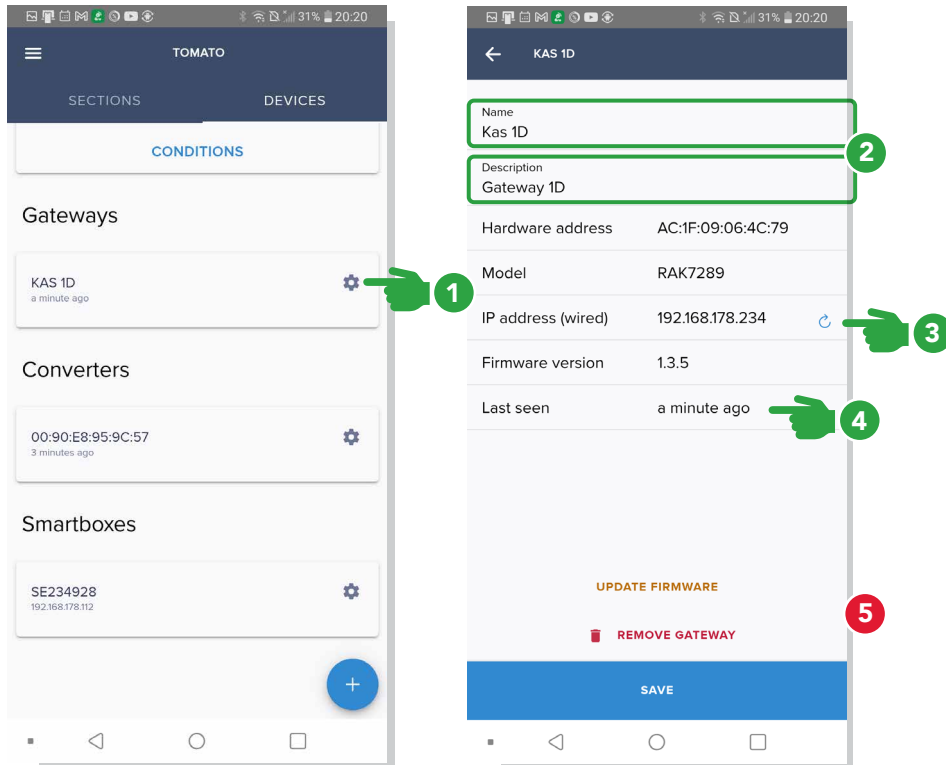
4 To remove Sensor, scroll to bottom of Settings screen for the desired Sensor and select Delete Sensor. This will disconnect and delete the data

# Device management - Sensor settings (via Sections tab)



1 The same Sensor modifications can be accessed from the Sections tab

# Device management: Gateway settings



1 From the Devices tab, select the Settings icon for the Gateway to be modified from the Gateways section

2 Optionally, you can fill in the Name and Description desired for the specific Gateway

3 Use refresh button to refresh IP address.

4 This is the last time moment the gateway connected to the bridge

5 **CAUTION:** If the Remove Gateway button is selected, it will prevent data transfer for this gateway

# e-Gro Companion – View data

	GroSens 2	
	e-Gro companion	
	desktop viewer (local/cloud)	mobile app
user settings		
metric/imperial		M/I
language	follows browser	UK/NL/FR/PL
time zone		facility based
system settings		
system back-up		x
user management		x
cloud services (APIs)		+, -, ST
hardware management		
bridge/smartbox	ST	+, -, R, ST
gateway / receiver	ST	+, -, ST
sensors	-, AS, ST	+, -, AS, ST, UP
converter	ST	+, -, AS, ST
facility management		
sections/rooms	UP, ST	+, -
tables/gutters	-	-
slab type	ST	per section/room
data viewer		
view sensors/averages	<= 7	1
time axis	1.5/3/7/30 days	1.5 days
adjustable y-axis	all graphs	
photoperiod	natural & artificial	
data export	180 days	
alerts		
min/max sensor values	WC/EC/T/RH/CO2	
sensor value changes	ΔWC/hr	
push notifications	HW & sensor alerts	HW & sensor alerts

+ = add; - = remove

R = reset; ST = status only (no editing)

AS = assign; UP = update

Changeable
Fixed

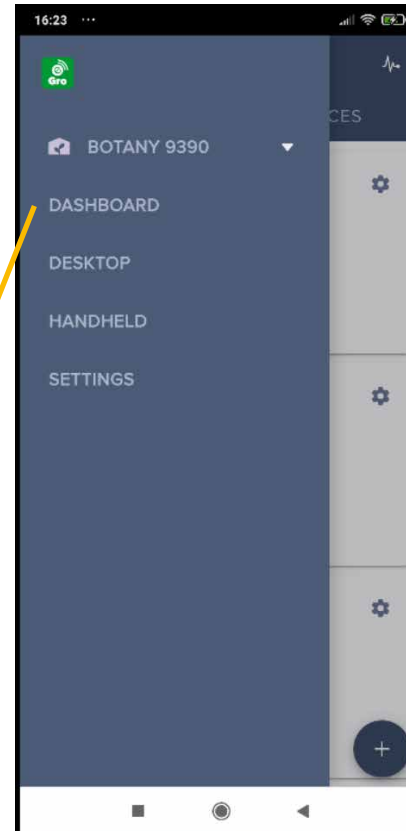
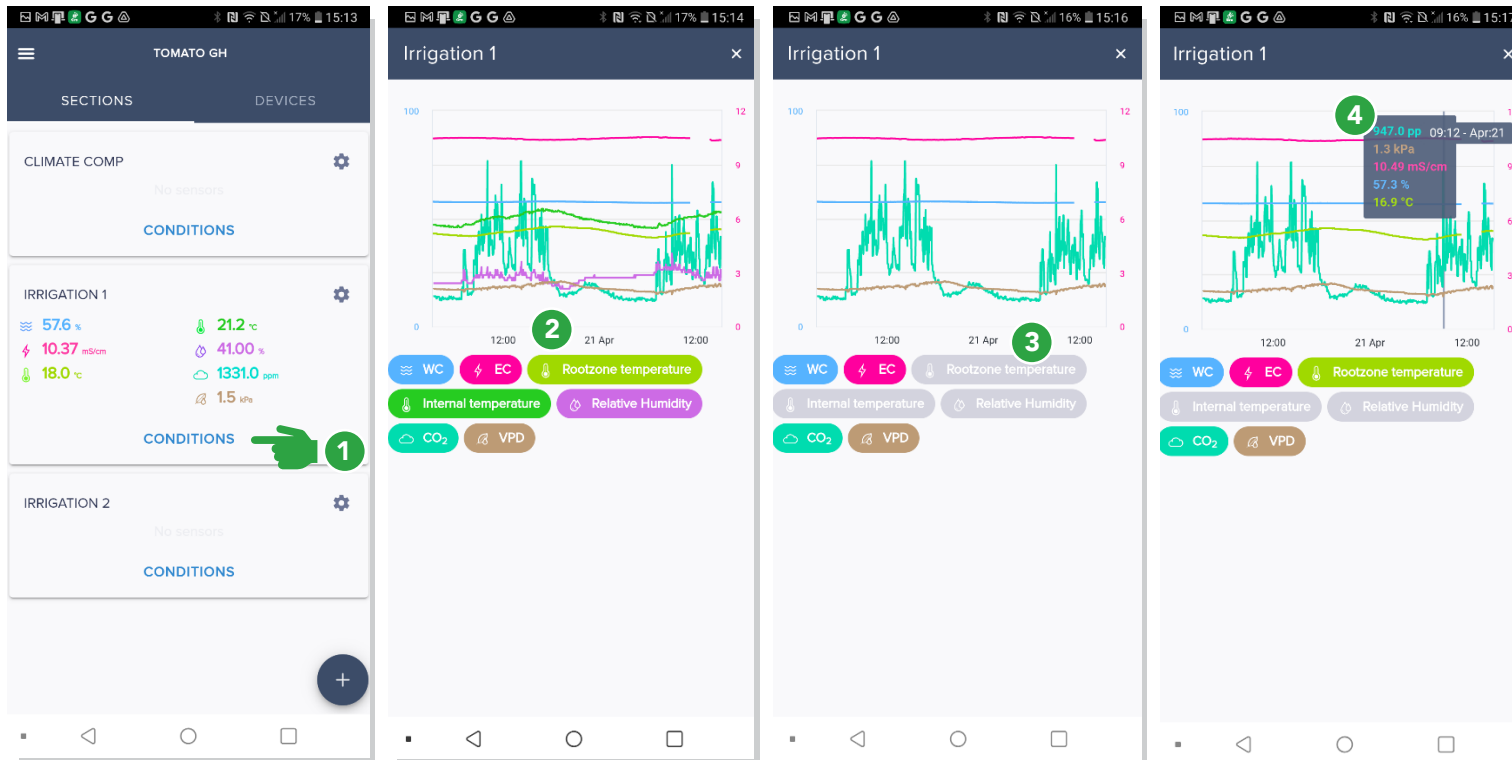


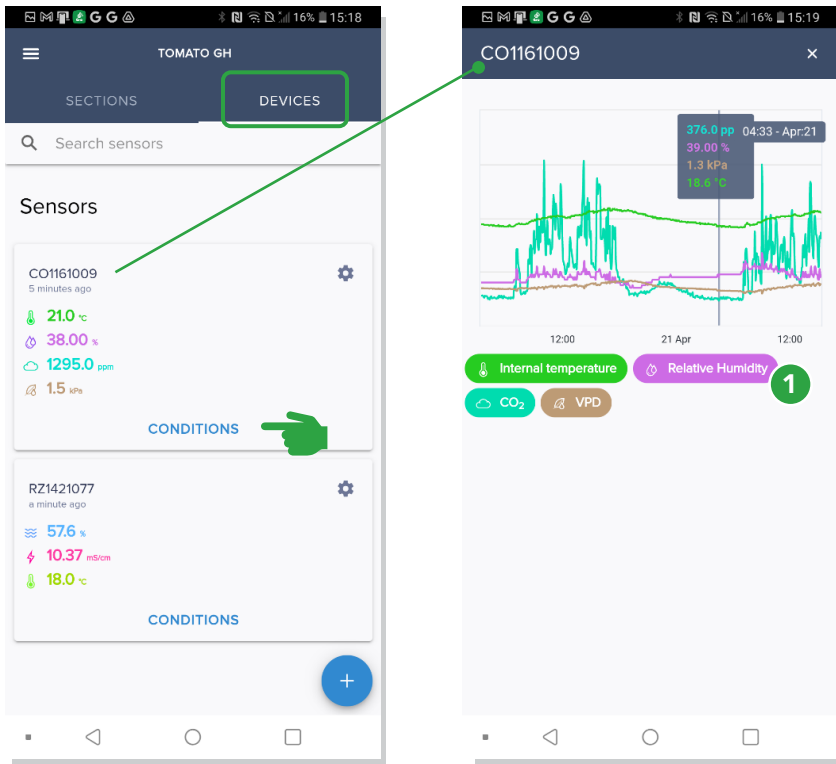
Table displays the different possibilities in the mobile app compared to desktop viewer

# View data – Average sensor graphs (via Section tab)



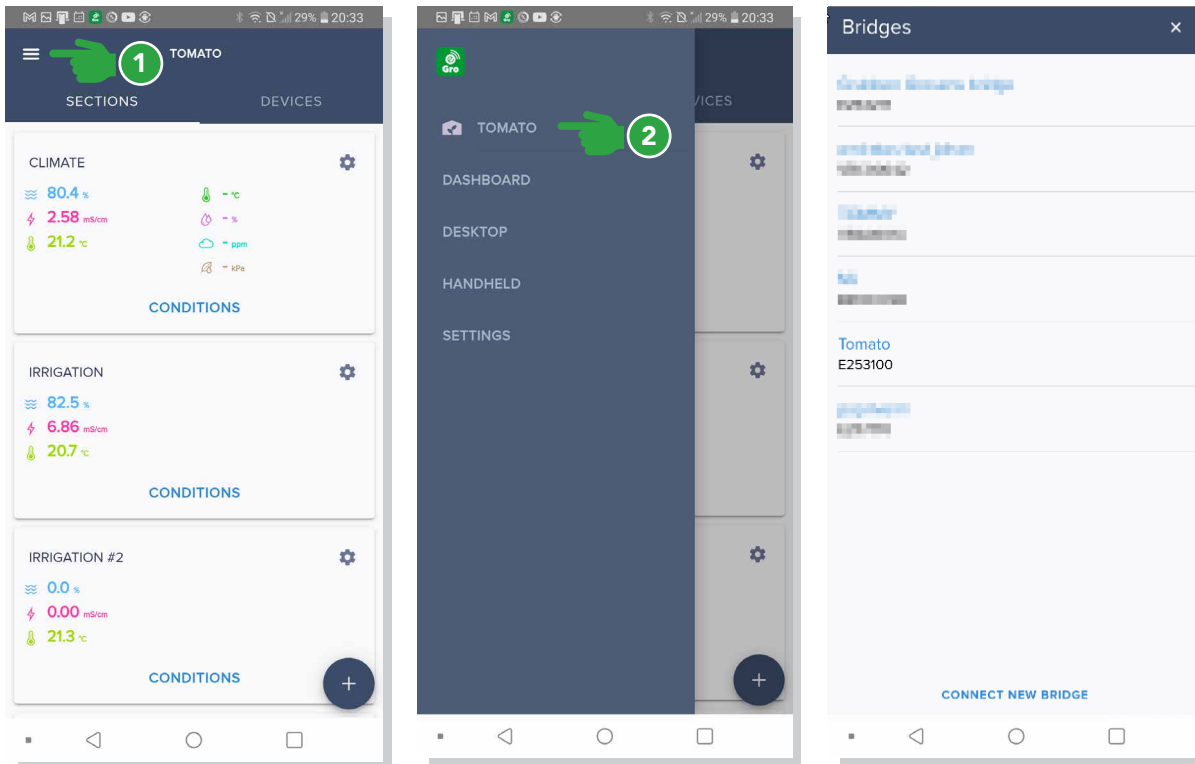
- 1 In Sections tab, Select Conditions in the Irrigation Zone desired.
- 2 The View time frame is preset for 36 hours. To view longer time frames, view in the desktop viewer.
- 3 Graph parameters options can be toggled on and off.
- 4 By moving over the graph, exact measurement values (always average of all sensors) can be read.

# View data – Specific sensor graphs (via Devices tab)



1 In sections, you can view averages per section. In devices, you can view individual sensors.

# Switching between multiple bridge



1 If your facility has multiple bridges, you can switch between these bridges by pressing the 'hamburger' menu [three lines]

2 Next press the bridge name you are currently connected to. A list of bridges will be shown, where you have access to. Also you will have the possibility to connect a new bridge.



The Grodan Group supplies innovative, sustainable stone wool substrate solutions for the professional horticultural sector. Based on Precision Growing principles, these solutions are particularly applied to the cultivation of vegetables and flowers. In addition to its stone wool substrates, the Grodan Group also provides tailor-made advice and tools to support Precision Growing and thus facilitate the sustainable production of healthy, safe and tasty fresh produce for consumers.

**Grodan, a division of ROCKWOOL**

Industrieweg 15  
Postbus 1160, 6040 KD Roermond  
The Netherlands  
T +31 (0)475 35 30 20  
F +31 (0)475 35 37 16  
info@grodan.com  
www.grodan.com



ROCKWOOL® and Grodan® are registered trademarks of the ROCKWOOL Group.